



CHEMISTRY BETWEEN US

AIB is the pioneer in modern solutions in the construction industry. We started our company in 1992, focusing on the production of innovative finishing and insulation materials. Quality of the AIB brand has been developed by the company founders thanks to their education in chemistry and engineering. Backed by over 25 years of experience, we offer proven solutions and high quality products. One of the basic elements which allowed us

to compete on the global market, was the introduction of a management system in accordance with EN ISO 9001:2015 and accomplishing a wide range of product certifications. We would like to emphasize the fact, that in addition to our standard offer, we design and implement solutions in accordance with the individual needs of our customers. Please check out our products and feel free to contact our Customer Service.

What makes us different?

- **Experience**

Gained over a period of 25 years, from a single production line to a plant employing over 150 people.

- **Technology**

Modern production lines and continuous efforts to optimize and automate the manufacturing process.

- **Innovation**

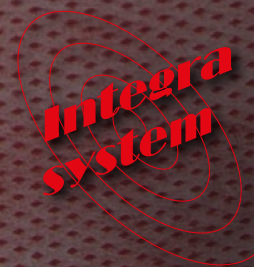
Own R&D Department and highly specialized staff allow us to pursue original ideas, and implement products according to customer specifications.

- **Quality**

Guaranteed by our modern laboratory and its management. The company owns the quality certificate EN ISO 9001:2015.

- **Logistics**

Perfectly organized transportation and logistics shorten delivery times to a minimum.



Integra System

The Integra System is a modern and versatile solution for the installation of windows and doors in a way that ensures their tightness for many years. The system consists of a series of tapes made from high-quality materials, which are used interchangeably depending on the design of the door or window opening. Integra System minimizes thermal bridges and protects the window-wall connection against uncontrolled air flow while protecting it against moisture. This solution significantly extends the life of such a connection and ensures the proper functioning of window frames for many years.

Integra System tapes are laminates consisting of a polypropylene or polyester non-woven combined with a special

membrane, which ensures the appropriate value of the S_d coefficient, determining its vapour permeability. It should be emphasized that the proper selection of materials with the recommended values allows for the construction of the connection in accordance with the fundamental principle: "Tighter on the inside than on the outside."

All Integra System products are equipped with an adhesive strip with a special Finger Lift option, which facilitates their application. Such a solution has been introduced as a response to customers' needs. Integra System tapes can be equipped with a butyl ribbon, with which they are fastened to the wall, which in turn allows to eliminate or reduce the need for extra adhesive.

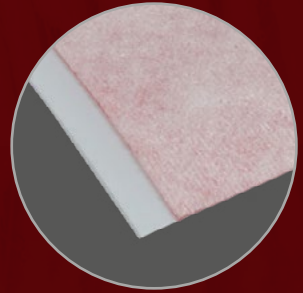
Integra Platinum Inside – is as vapour-tight window tape, which insulates and secures the gap between the window and the wall on the inside. The back of the tape is fully covered by a high-quality adhesive, which guarantees a tight connection to the most popular construction materials. The product does not contain solvents.

The tape is offered in two different versions:

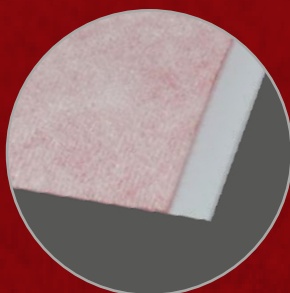
- **Platinum** – the back of the tape is fully covered by acrylic
- **Platinum+** – the back of the tape is fully covered by acrylic and additionally the tape is equipped with a self-adhesive strip on the top side, which is meant for application to the window frame.



● Integra Platinum Inside



● Integra Platinum + Inside



Specifications - Integra Platinum Inside

Properties	Test method	Result
Tensile strength [MPa]	EN 12311-3 method B, v = 100 mm/min	≥ 5,0
- lengthwise		
- widthwise		≥ 3,0
Elongation at break [%]	EN 12311-3 method B, v = 100 mm/min	≥ 40
- lengthwise		
- widthwise		≥ 70
Water vapour permeability s_d [m]	EN ISO 12572 method A	≥ 45
Adhesion [N/10 mm]	PN-EN 1939	> 15
Water tightness	EN 1928 24 h / 1000 mm H ₂ O	No leaks
Temperature of application		From -10°C to 35°C
Resistance to atmospheric agents		At least 3 months

Available widths	70 mm	100 mm	150 mm
Quantity per box	4 x 25 m	3 x 25 m	2 x 25 m
Quantity per pallet	96 boxes		

Integra Platinum Outside – Is as vapour-open window tape, which insulates and secures the gap between the window and the wall on the outside. The product prevents from water leaks from the outside. The back of the tape is fully covered by a high-quality adhesive, which guarantees a tight connection to the most popular construction materials. The product does not contain solvents.

The tape is offered in two different versions:

- **Platinum** – the back of the tape is fully covered by acrylic
- **Platinum+** – the back of the tape is fully covered by acrylic and additionally the tape is equipped with a self-adhesive strip on the top side, which is meant for application to the window frame.



● Integra Platinum Outside



● Integra Platinum + Outside



Specifications - Integra Platinum Outside

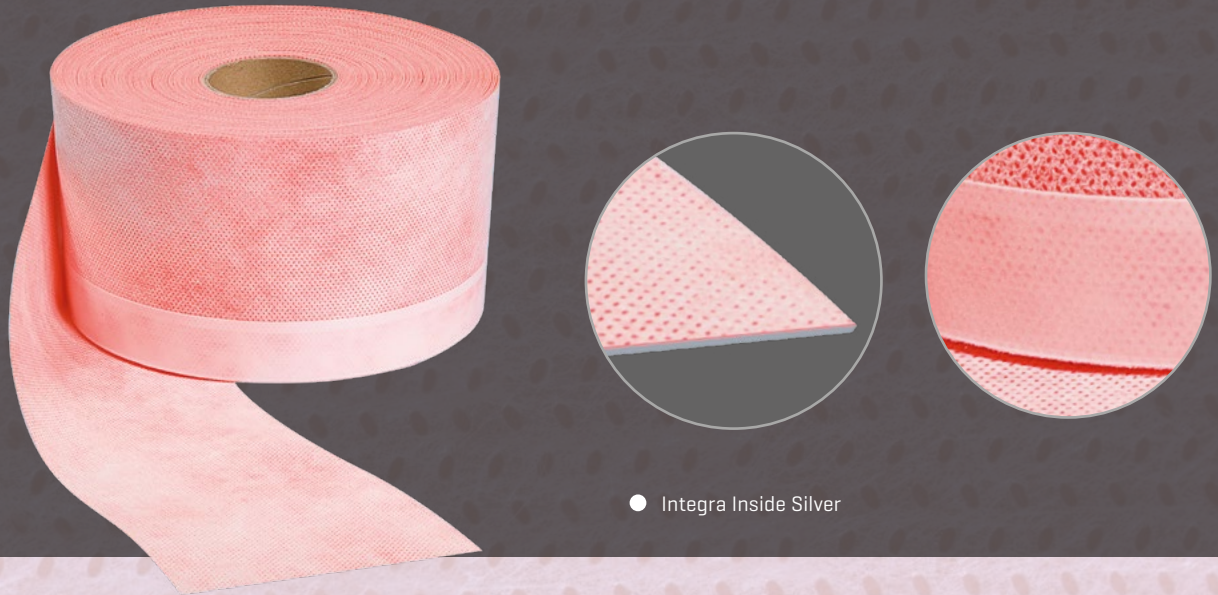
Properties	Test method	Result
Tensile strength [MPa]	EN 12311-3 method B, v = 100 mm/min	≥ 5,0
- lengthwise		≥ 3,0
- widthwise		
Elongation at break [%]	EN 12311-3 method B, v = 100 mm/min	≥ 40
- lengthwise		≥ 70
- widthwise		
Water vapour permeability s_d [m]	EN ISO 12572 method A	≤ 0,75
Adhesion [N/10 mm]	PN-EN 1939	> 15
Water tightness	EN 1928 24 h / 1000 mm H ₂ O	No leaks
Temperature of application		From -10°C to 35°C
Resistance to atmospheric agents		At least 3 months

Available widths	70 mm	100 mm	150 mm
Quantity per box	4 x 25 m	3 x 25 m	2 x 25 m
Quantity per pallet	96 boxes		

Integra Inside – tape with high Sd coefficient ensuring vapour permeability, dedicated for the insulation of connections inside the building. The film is coated on both sides with special nonwoven fabric that provides optimal adhesion of the adhesive and makes plastering and final processing easier. Internal vapour-proof films do not allow the penetration of moisture from condensation into the joint and form a barrier for moisture which could penetrate into the room, causing the formation of mould and mildew.

Internal films are produced in several versions:

- **Integra Inside Silver** – with an adhesive strip for mounting to the window frame;
- **Integra Inside Gold** – with an adhesive strip for mounting to the window frame and a butyl ribbon to adhere to the wall;
- **Integra Inside Titanium** – with an adhesive strip for mounting to the window frame and net for plastering.



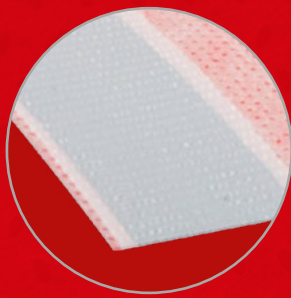
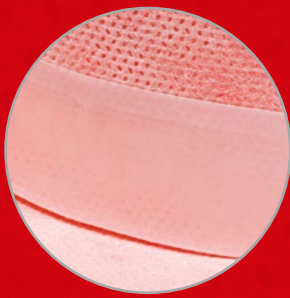
Specifications - vapour-tight membrane Integra Inside

Properties	Test method	Result	
Water tightness	EN 1027	class 9A	own testing
Vapour permeability	EN 12572	Sd ≤ 0,1 m	
Flammability class	EN 13501-1	B	
Adhesion of the adhesive tape	EN 1939	9N/10mm	
Tensile strength	EN 12311-3	≥ 7 Mpa	
Tear strength	EN 12311-3	≥ 50%	
Air permeability	EN 1026	class 4	
UV Resistance		1 year	
Shelf life		1 year	Storage in a dry place at a temperature of +1 to +25°C
Application temperature		from +5 to +35°C	

Available widths	70 mm	100 mm	150 mm
Package – quantity per box	4 x 30 m	3 x 30 m	2 x 30 m
Quantity per pallet	120 boxes		



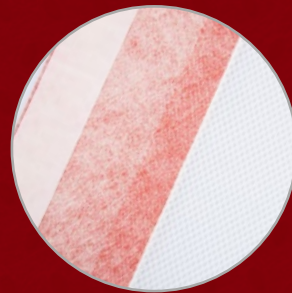
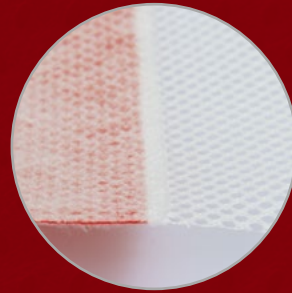
● Integra Inside Gold Single Sided



● Integra Inside Gold Double Sided



● Integra Inside Titanium



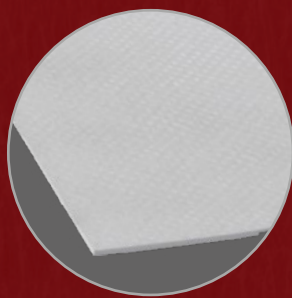
Integra Inside

Integra Outside – tape dedicated to the insulation of the connection on the outside, made of a highly vapour-permeable membrane having a very low Sd coefficient. Thanks to the nonwoven fabric coating, it provides optimal adhesion of the adhesive and makes plastering and final processing easier. External films are designed to protect the window-wall connection against the ingress of rain water and allow drainage of moisture from the connection to the outside of the building. In addition, they provide an excellent

barrier to wind, increasing the quality of the joint constructed. Internal films are produced in several versions:

- **Integra Outside Silver** – with an adhesive strip for mounting to the window frame;
- **Integra Outside Silver** – with an adhesive strip for mounting to the window frame and a butyl ribbon to adhere to the wall.

Please note that the external films should be covered within a maximum of 3 months from the date of installation.

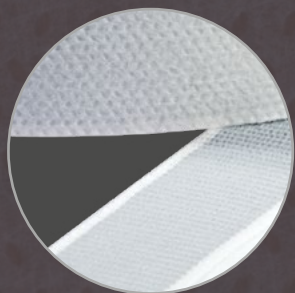


● Integra Outside Silver

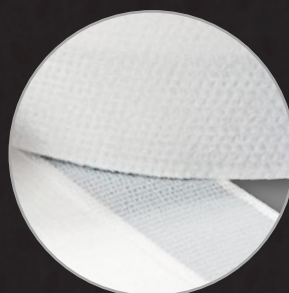
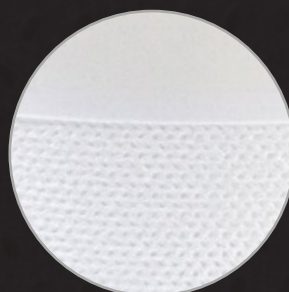
Specifications - vapour-open membrane Integra Outside

Properties	Test method	Result	
Water tightness	EN 1027	class 9A	own testing
Vapour permeability	EN 12572	Sd ≤ 0,1 m	
Flammability class	EN 13501-1	B	
Adhesion of the adhesive tape	EN 1939	9N/10mm	
Tensile strength	EN 12311-3	≥ 6 Mpa	
Tear strength	EN 12311-3	≥ 60%	
Air permeability	EN 1026	class 4	
UV Resistance		3 months	
Shelf life		1 year	Storage in a dry place at a temperature of +1 to +25°C
Application temperature		+5 to +35°C	

Available widths	70 mm	100 mm	150 mm
Package – quantity per box	4 x 30 m	3 x 30 m	2 x 30 m
Quantity per pallet	120 boxes		



● Integra Outside Gold Single Sided



● Integra Outside Gold Double Sided

Integra Outside

Integra Vario – tape based on a special smart membrane with a variable value of Sd, which makes it a versatile solution for both internal and external applications. This eliminates the possibility of errors during application of the film. These films are made in two versions:

- **Integra Vario Silver** – with an adhesive strip for mounting to the window frame;
- **Integra Vario Gold** – with an adhesive strip for mounting to the window frame and a butyl ribbon to adhere to the wall.



● Integra Vario Silver



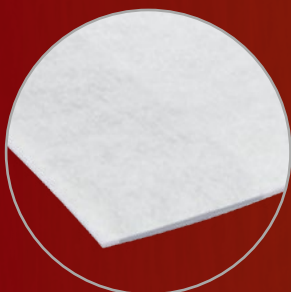
Specifications – universal tape Integra Vario

Properties	Test method	Result	
Water tightness	EN 1027	class 9A	own testing
Vapour permeability	EN 12572	Sd ≤ 0,1 m	
Flammability class	EN 13501-1	B	
Adhesion of the adhesive tape	EN 1939	9N/10mm	
Tensile strength	EN 12311-3	≥ 6 Mpa	
Tear strength	EN 12311-3	≥ 60%	
Air permeability	EN 1026	class 4	
UV Resistance		3 months	
Shelf life		1 year	Storage in a dry place at a temperature of +1 to +25°C
Application temperature		from +5 to +35°C	

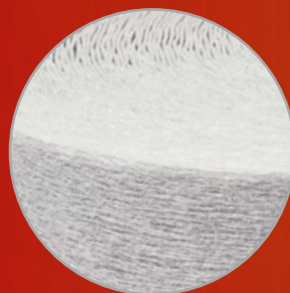
Available widths	70 mm	100 mm	150 mm
Package – quantity per box	4 x 30 m	3 x 30 m	2 x 30 m
Quantity per pallet	120 boxes		



● Integra Vario Gold Single Sided



● Integra Vario Gold Double Sided



Integra Vario

We are proud to introduce **SIMPLEX BASIC** - a complete system of window installation within the insulation layer:

- Perfect for passive houses
- Eliminates thermal bridges around the window
- Prevents wall freezing within the connection with the window
- Tight, durable and meant for carrying high loads
- Allows to replace the window without damaging the elevation
- Window installation 90 mm outside the wall

The frame consists of **SIMPLEX BASIC** profiles attached to the wall by special mounting glue **SIMPLEX SEALANT** and

screws. The connection stays warm, solid, stable and allows mounting the window within the insulation layer.

The system consist of:

- Base profiles **SIMPLEX BASIC**
- Adjustable window sill connection profiles
- Hybrid adhesive **SIMPLEX SEALANT**, which can also be used as a sealant
- Window installation tapes **INTEGRA SIMPLEX**



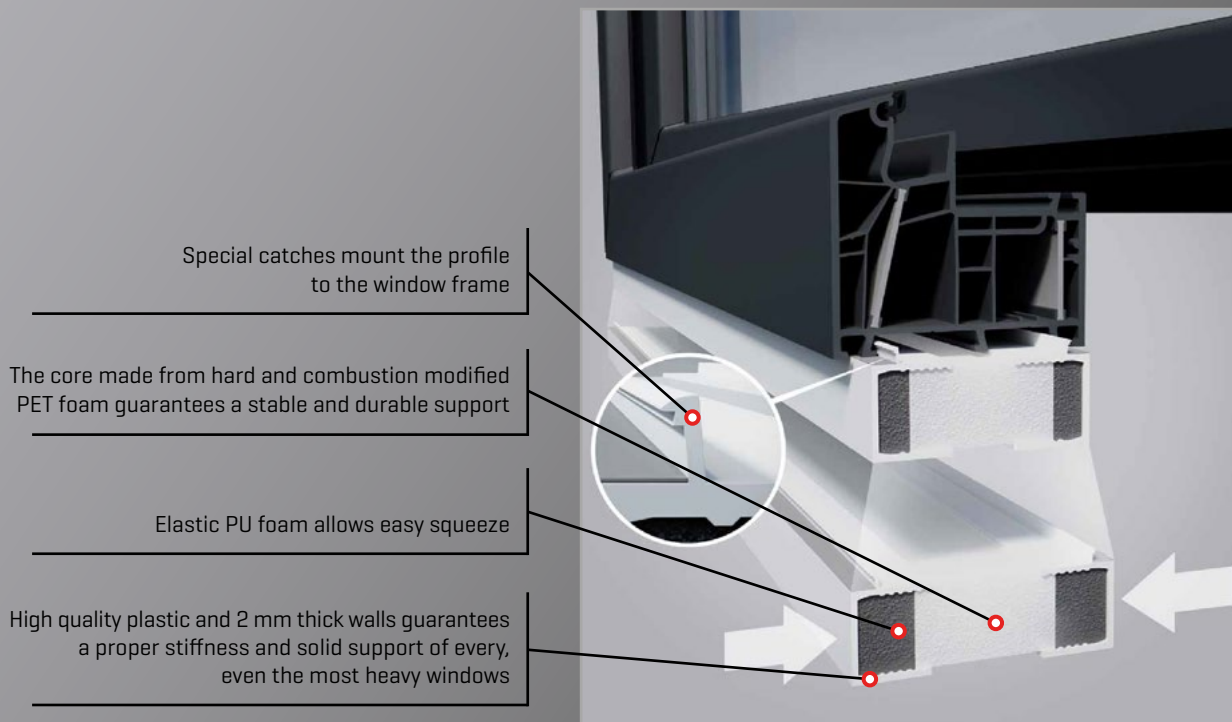
While designing the components of **SIMPLEX BASIC** we knew, that it should be easy to install:

- Ready to use $\varnothing 8$ mm mounting sleeves, allowing the dowels to wedge
- The profiles are compact (600 mm long) and just 750 g light
- Catches at the end of the profiles guarantee proper alignment
- Small grooves at the back of the profiles allow easy application and positioning of glue
- The square side-cut facilitates the afterward installation of insulation
- No need for plastering the jamb
- Short time for tight closing the window opening



NEW! First available universal window connection profile **SIMPLEX MULTIBASE** with adjustable width, allowing a quick fitting to the window frame. The width of the profile is continuous adjustable between 55 mm and 82 mm. This feature makes it possible to connect **MULTIBASE** to nearly all PVC and aluminium windows.

The profile is filled with high performance insulating material, in order to achieve a low heat transition coefficient.



EQUIPMENT

· **SIMPLEX SEALANT:**

- Evenly carries the loads between the base profile and the wall
- Levels the unevenness of the wall
- Seals the connection between the wall and the base profile
- Fills the dilatation joints
- Insulates the connection between the base and the window sill connection profiles

Packed in foil 870g (600ml)

· **Mounting screws:**

Depending on the type of wall, there is a possibility to use screws with dowels wedging in the mounting sleeves or frame fixing screws, which:

- make the carrying capacity higher
- guarantee a proper tightening during gluing
- compatibility to the mounting sleeves facilitates and speeds up the process

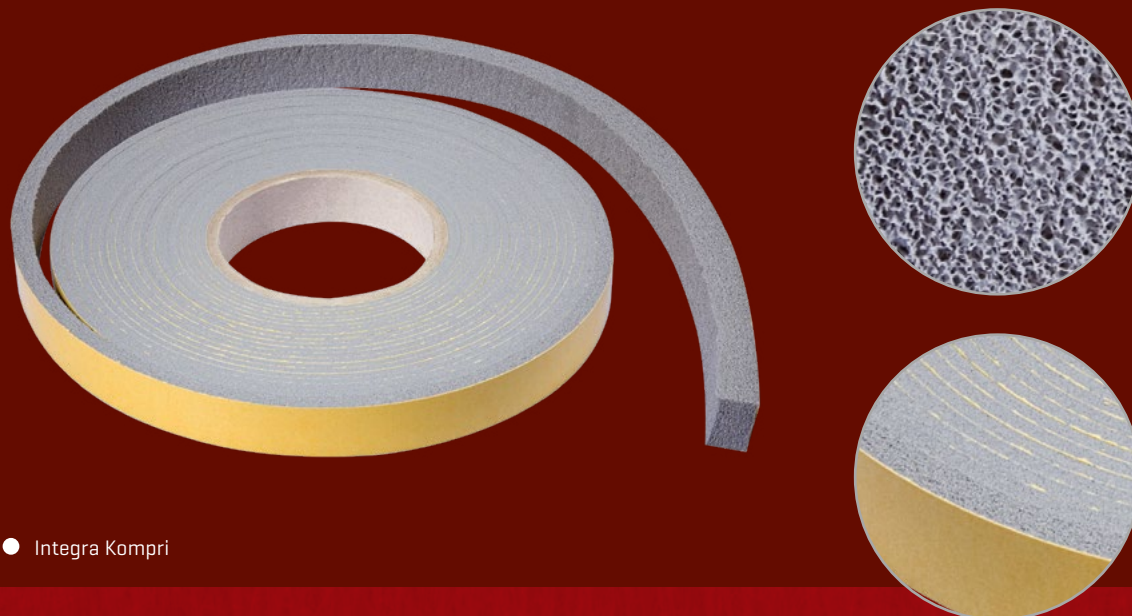
· **INTEGRA SIMPLEX tapes:**

- guarantee full tightness of the connection between the window and base profile
- allow to install windows according to the most modern requirements
- protect the PU foam from atmospheric agents
- enables effective moisture transfer from the mounting clearance



Integra Kompri – self-expanding, open cell, impregnated tape based on polyurethane foam. The product is coated with an acrylic adhesive on one side. It does not contain plasticizers. It is supplied in the form of compressed rolls in bulk packaging. This type of tape is most common-

ly used as a seal between the window and the jamb. It is used in particular for renovations and repairs, when the window opening is already plastered. Integra Kompri is offered in three classes: BG1, BG2 and DB.



● Integra Kompri

Specifications – Integra Kompri BG1

Properties	Test method	Result
Density		120 kg/m ³
Water tightness	EN 86	no leaks at 600 Pa
Flammability class	DIN 4102	B1
Tensile strength		170 kPa
Tear strength		170%
Air permeability	EN 42	≤ 0,01 m ³ /h * m * [daPa]n
Temperature resistance		-40°C to +100°C [+130°C for a short period of time]
Heat transfer coefficient		λ= 0,043 W/m·K

Dimensions

Size	Joint	Thickness	m/roll	rolls/box	m/box
10/2	2 - 3 mm	10 mm	12,5	30	375
15/3	3 - 4 mm	15 mm	10	20	200
15/6	6 - 9 mm	30 mm	5,6	20	112
20/4	4 - 6 mm	20 mm	8	15	120
20/6	6 - 9 mm	30 mm	5,6	15	84

Specifications – Integra Kompri BG2

Properties	Test method	Result
Density		80 kg/m ³
Water tightness	EN 86	no leaks at 300 Pa
Flammability class	DIN 4102	B1
Tensile strength		170 kPa
Tear strength		170%
Air permeability	EN 42	≤ 0,01 m ³ /h * m * [daPa]n
Temperature resistance		-40°C to +100°C [+130°C for a short period of time]
Heat transfer coefficient		λ= 0,041-0,042 W/m·K

Dimensions

Size	Joint mm	Thickness mm	m/roll	rolls/box	m/box
10/2	2 - 3	10	12,5	30	375
10/3	3 - 4	15	10	30	300
10/4	4 - 6	20	8	30	240
15/2	2 - 3	10	12,5	20	250
15/3	3 - 4	15	10	20	200
15/4	4 - 6	20	8	20	160
15/6	6 - 9	30	5,6	20	112
15/8	8 - 12	40	4,3	20	86
20/4	4 - 6	20	8	15	120
20/6	6 - 9	30	5,6	15	86
30/12	12 - 20	60	2,6	10	26

Specifications – Integra Kompri DB

Properties	Test method	Result
Density		50 kg/m ³
Water tightness	EN 86	no leaks at 300 Pa
Flammability class	DIN 4102	B1
Tensile strength		155 kPa
Tear strength		170%
Air permeability	EN 42	≤ 0,01 m ³ /h * m * [daPa]n
Temperature resistance		-40°C to +100°C [+130°C for a short period of time]
Heat transfer coefficient		λ= 0,039-0,045 W/m·K

Dimensions

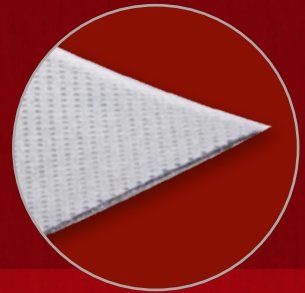
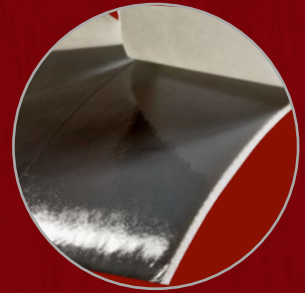
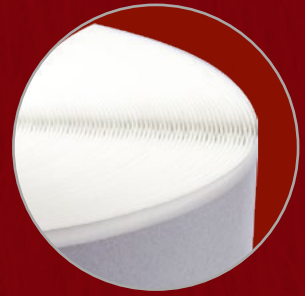
Size	Joint mm	Thickness mm	m/roll	rolls/box	m/box
10/2-3	2 - 3	10	12,5	30	375
10/3-4	3 - 4	15	20	30	600
15/3-4	3 - 4	15	20	30	600
15/3-7	3 - 7	20	15	20	300
15/5-8	5 - 8	25	12	20	240
15/5-10	5 - 10	30	10	20	200
20/5-10	5 - 10	30	10	15	150
20/7-12	7 - 12	40	8	15	120
20/10-16	10 - 16	50	6	15	90

The range of internal materials also includes tapes B1 and B2.

Fleece butyl tape B1 – nonwoven fabric butyl-coated over the entire width. It is a perfect solution as a seal at the bottom of windows or additional corner insulation. Thanks to the butyl, the possibility of forming the connection definitely increases while very good tightness and ease of installation is maintained.



● Integra B1



Specifications – Fleece butyl tape B1

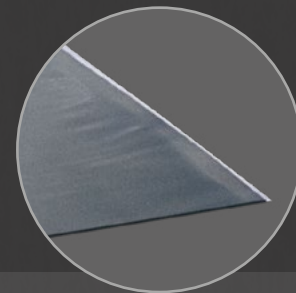
Properties	Test method	Result	
Water tightness	EN 1027	class 9A	own testing
Vapour permeability	EN 12572	Sd 1000 m	own testing
Flammability class	EN 13501-1	E	own testing
Adhesion of butyl	EN 1939	2 N/mm	
Tensile strength	EN 12311-3	≥ 2 Mpa	
Tear strength	EN 12311-3	≥ 70%	
Air permeability	EN 1026	class 4	own testing
Shelf life		1 year	Storage in a dry place at a temperature of +1 to +25°C
Application temperature		from +5 to +35°C	

Available widths	75 mm	100 mm	150 mm
Package – quantity per box	1 roll	1 roll	1 roll
Quantity per pallet	144 rolls	120 rolls	96 rolls

Aluminium butyl tape B2 – tape coated with a layer of aluminium on one side and butyl on the other side. It is an ideal solution for internal seals, for example, in aluminium structures, conservatories, etc. When installing windows and doors, which have high requirements for air tightness, the film can be used interchangeably with B1 film.



● Integra B2



Integra B1 & B2

Specifications – Aluminium butyl tape B2

Properties	Test method	Result	
Water tightness	EN 1027	class 9A	own testing
Vapour permeability	EN 12572	Sd ≥ 1500 m	
Flammability class	EN 13501-1	E	own testing
Adhesion of butyl	EN 1939	2 N/mm	
Tensile strength	EN 12311-3	≥ 3 Mpa	
Tear strength	EN 12311-3	≥ 30%	
Air permeability	EN 1026	class 4	own testing
Shelf life		1 year	Storage in a dry place at a temperature of +1 to +25°C
Application temperature		from +5 to +35°C	

Available widths	50 mm	70 mm	100 mm
Package – quantity per box	1 roll	1 roll	1 roll
Quantity per pallet	144 rolls	144 rolls	120 rolls



AIB spółka z ograniczoną odpowiedzialnością sp.k.

Przemysłowa 22
PL 44-190 Knurów
Tel. +48 32 335 79 00
E-Mail: firma@aib.com.pl
www.aib.com.pl